

POWERLITE 9000

High-Energy pulsed Nd:YAG lasers
with excellent beam quality and versatility



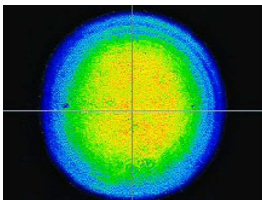
MAIN FEATURES

- Up to 3 J @ 1064 nm
- Robust and field-proven technology
- Barium sulfate diffuser for improved beam uniformity and pump efficiency
- Flashlamp warranty up to 50 million shots for operation without downtime
- User-configurable harmonic modules for user-friendly wavelength switch
- Cables and cooling lines disconnectable for easy integration
- Intuitive GUI interface, laptop included
- SLM option (Single Longitudinal Mode) for long coherence length
- Optional chiller for use in any environment

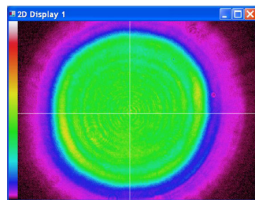
MAIN APPLICATIONS

- LiDAR
- INSTRUMENTATION
- PLD
- DYE, OPO & Ti:Sa PUMPING
- SPECTROSCOPY
- LIF
- COMBUSTION

Typical beam profiles



Near field 2 J @ 532 nm, 10 Hz



Near field 2.5 J @ 532 nm, 10 Hz

www.quantel-laser.com

Many options and configurations are available. Please contact Lumibird to find the best match for your needs and compatibility between options.



Lumibird has locations across the globe that are available to provide support for any product, service or inquiry. Visit www.lumibird.com to connect with any of our global sites.

POWERLITE 9000

High-Energy pulsed Nd:YAG lasers
with excellent beam quality and versatility



SPECIFICATIONS

		9010	9020	9030	9050	Plus	Plus 2 J	Plus 2.5 J
Repetition rate (Hz)		10	20	30	50	10		
Energy per pulse (mJ)	1064 nm	2000	1800	1600	1200	3000	-	-
	532 nm	1000 ⁽¹⁾ /1400	900 ⁽¹⁾ /1200	800 ⁽¹⁾ /1100	600 ⁽¹⁾ /800	1500 ⁽¹⁾	2000 ⁽¹⁾	2500 ⁽¹⁾
	355 nm ⁽²⁾	550	475	400	350	800	NA	
	266 nm	160	110	90	75	160	NA	
Pulse duration (ns) ⁽³⁾	1064 nm	6 - 9				-	-	-
	532 nm	5 - 8				5 - 8	6 - 8	-
	355 nm	4 - 7				NA		
	266 nm	4 - 6				NA		
Beam diameter ⁽⁴⁾ (mm)	1064 nm	9				12		
Beam divergence ⁽⁵⁾ (mrad)	1064 nm	0.45		0.5		0.45		
Spatial profile @ 1064 nm ⁽⁶⁾	Horizontal near field ⁽⁷⁾	0.7			0.65		0.7	
	Far field ⁽⁸⁾	0.95			0.9		0.95	
Max deviation from fitted Gaussian ⁽⁹⁾ (± %)	Near field	40						
Polarization	1064 nm	Horizontal						
	532 nm	Vertical						
	355 nm	Horizontal						
	266 nm	Horizontal						

- (1) Using type II doubler
 (2) Using type I doubler
 (3) Measured at FWHM with fast photodiode and 1 GHz oscilloscope
 (4) At the output of the laser
 (5) Full angle, at 1/e² of the peak
 (6) Least square fit to Gaussian (perfect fit = 1)
 (7) Measured at 1 m from laser output
 (8) At focal plane of a 2 m focus lens
 (9) Within FWHM points near field at 1 meter

Pulse to pulse energy stability (%) ⁽¹⁰⁾	1064 nm	± 2.5 (0.8)	± 2.5 (0.8)	± 3 (1)	± 2.5 (0.8)	-
	532 nm	± 3 (1)	± 3 (1)	± 4 (1.3)	± 3 (1)	± 3 (1)
	355 nm	± 4 (1.3)	± 4 (1.3)	± 6 (2)	± 4 (1.3)	NA
	266 nm	± 8 (2.6)	± 9 (3)	± 9 (3)	± 8 (2.6)	NA
Power drift (%) ⁽¹¹⁾	1064 nm	± 3				-
	532 nm	± 6				± 6
	355 nm	± 6				NA
	266 nm	± 8				NA
Pointing stability (µrad) ⁽¹²⁾	All wavelengths	± 30				
Jitter @ 1064 nm (ns) ⁽¹³⁾	Standard	± 0.5		± 0.6	± 0.5	
	SLM	± 1				
Linewidth @ 1064 nm (cm ⁻¹)	Standard	1 ⁽¹⁴⁾				
	SLM	0.003 ⁽¹⁵⁾				

- (10) Peak to peak, 99% of the shots (RMS), on 200 consecutive shots
 (11) Over 8 hours for ΔT² ≤ ± 3°C
 (12) 99.9% shots will be < ± 30 µrad with ΔT room < ± 3°C
 (13) With respect to external trigger
 (14) Measured at FWHM with a grating spectrometer with 0.045 cm⁻¹ resolution
 (15) Measured at FWHM with a slow scan Fabry-Perot etalon

www.quantel-laser.com

Many options and configurations are available.
Please contact Lumibird to find the best match for
your needs and compatibility between options.



Lumibird has locations across the globe that are available to provide support for any product, service or inquiry. Visit www.lumibird.com to connect with any of our global sites.

POWERLITE 9000

High-Energy pulsed Nd:YAG lasers
with excellent beam quality and versatility



SPECIFICATIONS

Power requirements		200 - 240 VAC, single phase, 50/60 Hz							
		9010	9020	9030	9050	Plus	Plus 2 J	Plus 2.5 J	
		14 A	21 A	24 A	35 A	21 A	30 A		
Cooling (water to water)	GPM (gallons/minute) ⁽¹⁶⁾	1 - 2		2 - 3		1 - 2			
	Temperature ⁽¹⁷⁾	< 22° C / 70° F							
Operating temperature		18 to 30° C / 65 to 87° F							
Cable length		5 m (16.4 ft)							
Flashlamp warranty		50 million shots ⁽¹⁸⁾							

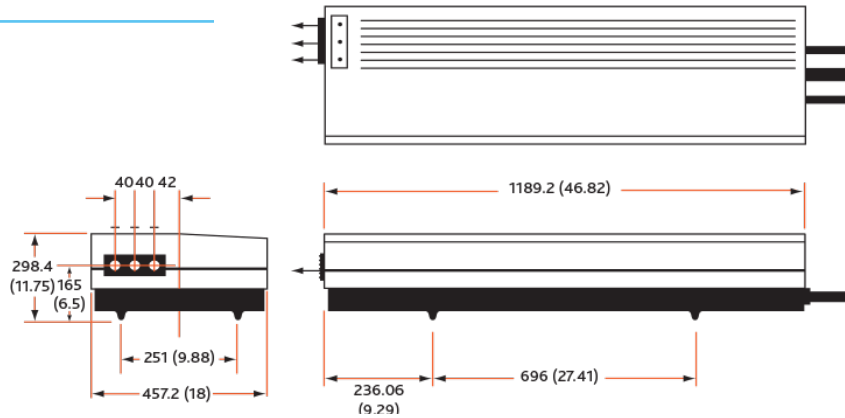
(16) at 10 - 40 PSI pressure drop

(17) higher flow rate for higher temperature

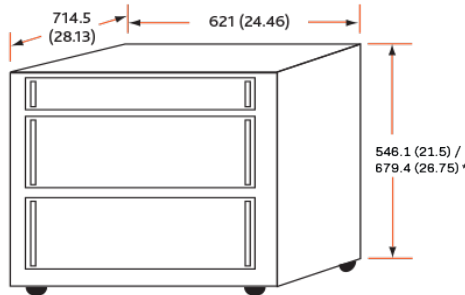
(18) 80% of energy, or 1 year, whatever comes first

Laser head

Dimensions in mm (inches)



Integrated cooling & electronics



* 9050 & Plus series



DANGER
INVISIBLE LASER RADIATION
AVOID EYE OR SKIN EXPOSURE TO
DIRECT OR SCATTERED RADIATION
CLASS 4 LASER PRODUCT

www.quantel-laser.com

Many options and configurations are available.
Please contact Lumibird to find the best match for
your needs and compatibility between options.



Lumibird has locations across the globe
that are available to provide support
for any product, service or inquiry.
Visit www.lumibird.com to connect with any of our global sites.